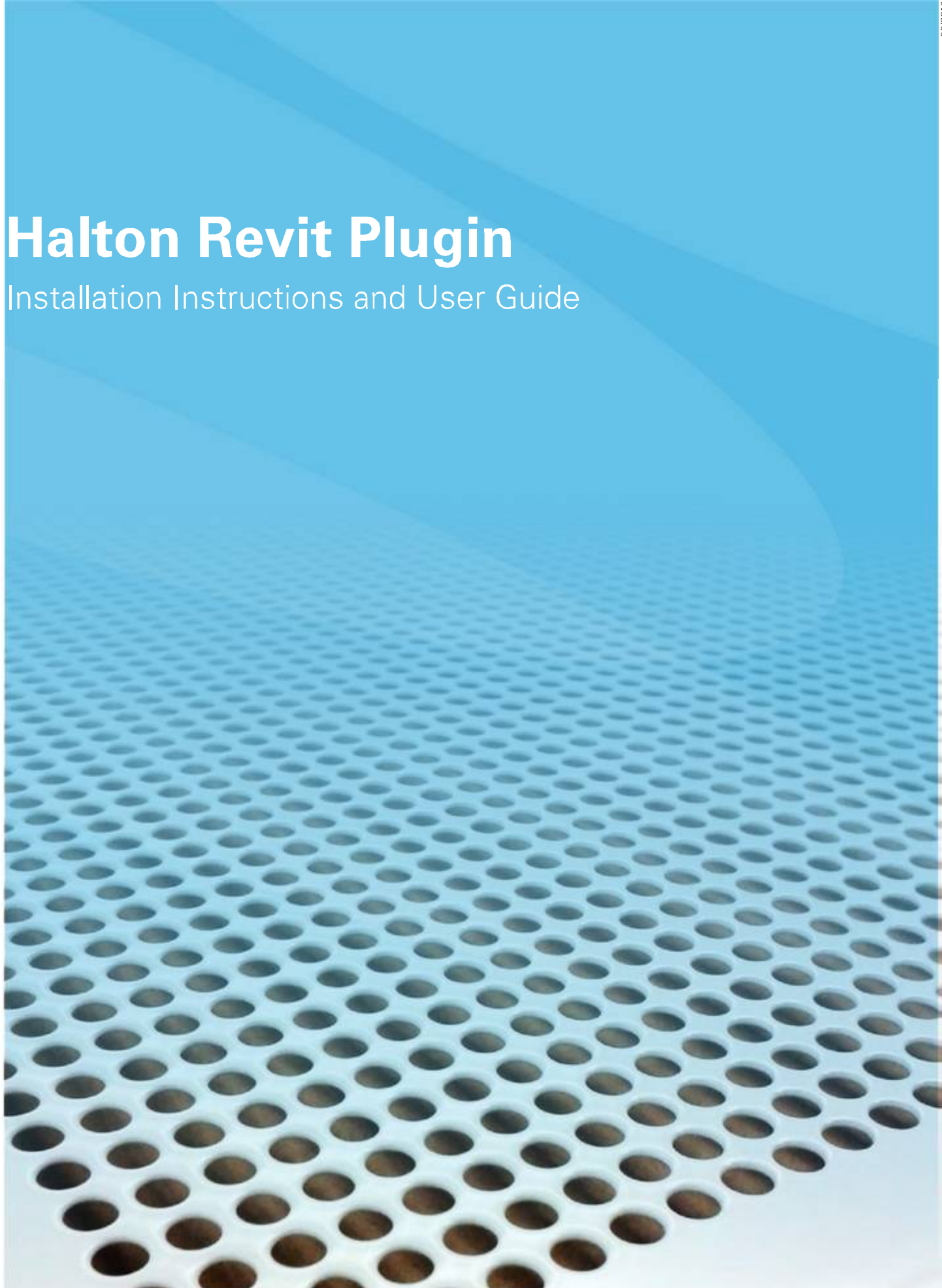


Halton Revit Plugin

Installation Instructions and User Guide





Content

About this document	3
Installing the software	4
Required MagiCAD version	4
Installation	4
Starting the program	5
Inserting Halton products from Product Storage	6

About this document

The purpose of Halton Revit plugin is to add Halton product to MagiCAD for Revit or Revit via Product Storage.

Installing the software

Required MagiCAD version

Revit

- 2015, 2016, 2017

MagiCAD (optional)

- MagiCAD for Revit 2015.11 or newer (with Revit 2015 and 2016)
- MagiCAD for Revit 2016.4. or newer (with Revit 2016 and 2017)

Installation

1. Ensure that you have required Revit version installed on your computer
2. Install Halton Revit plugin. Installation packages can be downloaded from

<https://portal.magicad.com/download/ProductSearch?searchStr=Halton&categoryId=3>

The 64-bit version of the program is installed by running the installation program
Halton Revit plugin 2016.6.1.msi

Administrator privileges are recommended for installation.

Starting the program

After running the installation, Halton panel appears in Revit Add-Ins –ribbon tab and user can export Halton product from Halton HIT Design or Product Storage

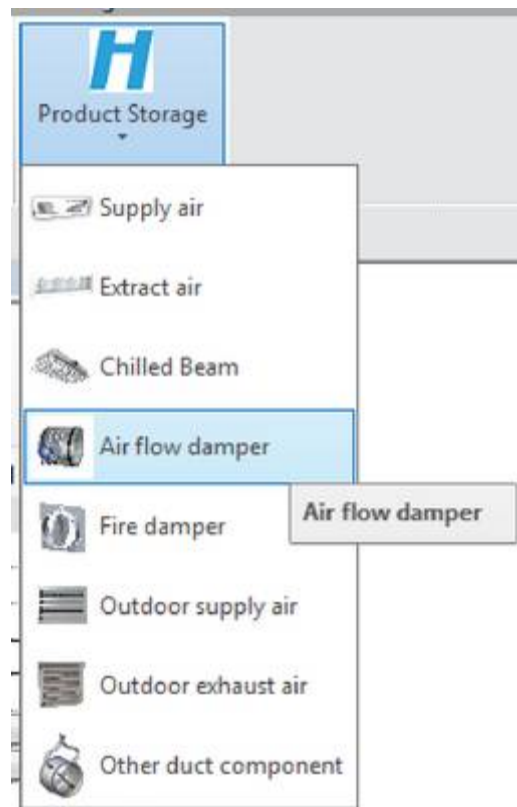


Inserting Halton products from Product Storage

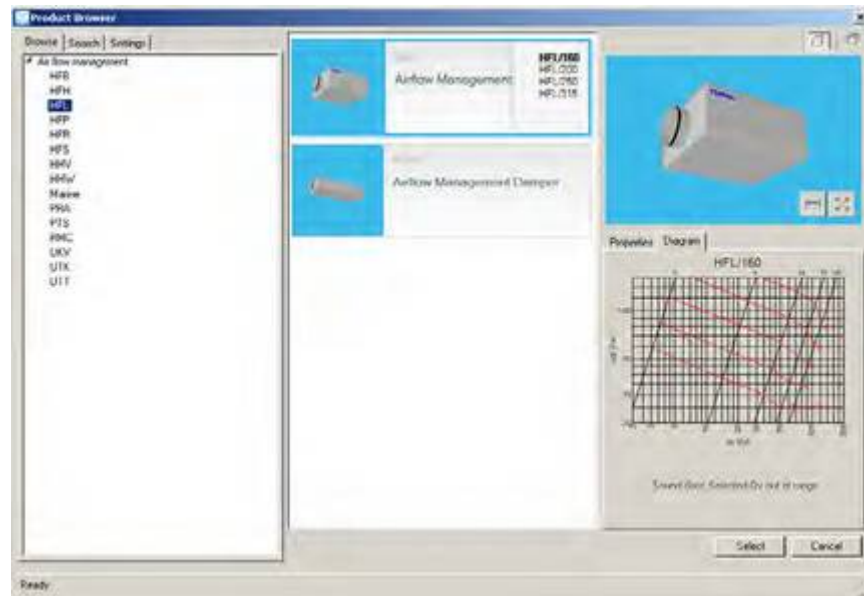
In order to add Halton product, click Revit Add-Ins –ribbon tab and Product Storage –button in Halton panel.



1. Select from Product Storage one of the product group



2. With Product browser you may easily check different products size, view data and measurements. Click Select when desired device is found.



3. Insert device to Revit.

